

Photometric Report

MAC Aura XIP – Narrow

MARTIN PROFESSIONAL R&D OPTICAL LABORATORY

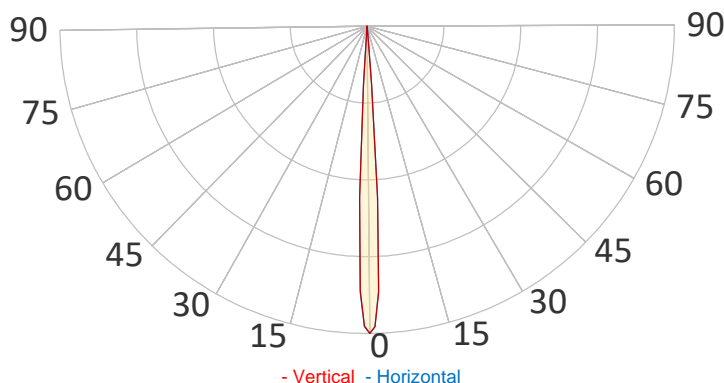
GENERAL SPECIFICATIONS

Total Fixture Output:	6000 lm
Light Engine Output:	11 klm
Efficacy:	21 lm/W
Lens Option:	N/A
Beam Angle (50%):	6,3-35,3°
Field Angle (10%):	8,8-50,4°
Cut-off Angle (3%):	10,4-58,7°
CRI:	71
CQS:	80
TM-30 Rf:	78
TM-30 Rg:	117
TLCI:	56
Color Temperature:	6500 K

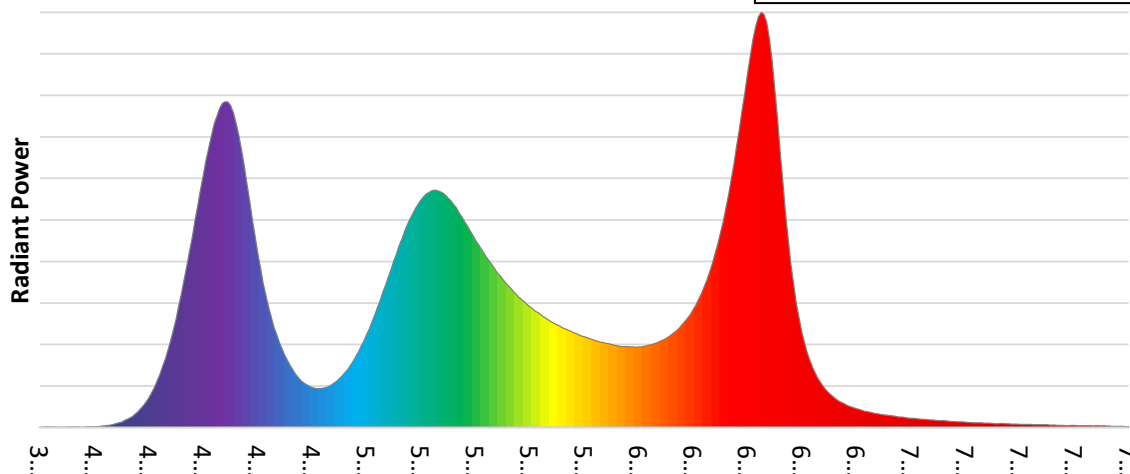


SAMPLE MEASUREMENT

POLAR PLOT



SPECTRAL DISTRIBUTION



Catalog Number:	MAR-90250100HU
Measured Output:	4505 lm
Measured Peak:	357870 cd
Consumed Power:	282 W
Efficacy:	16 lm/W

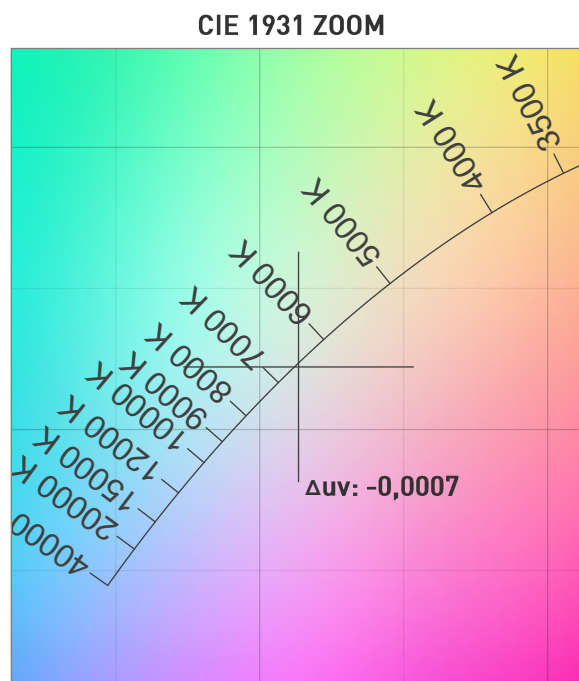
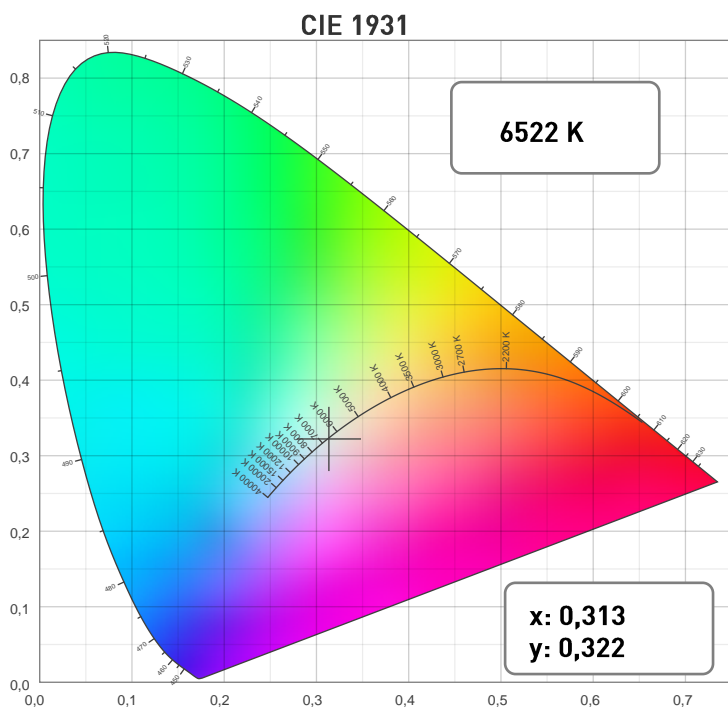
Beam Angle (50%):	6,3°
Field Angle (10%):	8,8°
Cut-off Angle (3%):	10,4°

Measurement Condition:	
Ambient Temperature:	25° +/- 5° C
AC Supply:	230V/50Hz
Fan Mode:	Constant Fan Full
Fixture Warm-up Time:	30 minutes

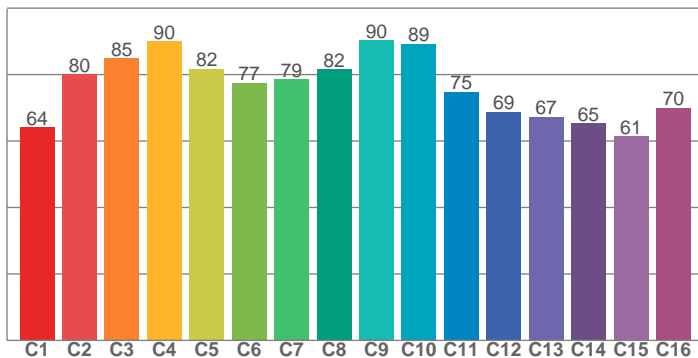
Photometric Report

MAC Aura XIP – Narrow

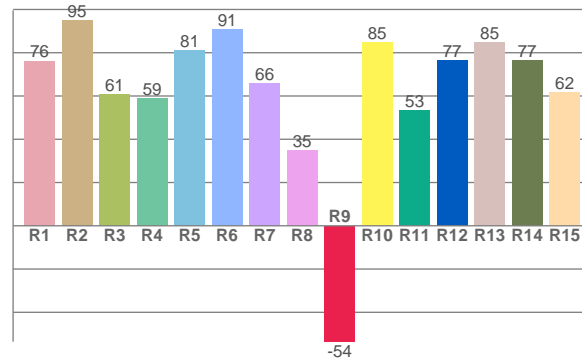
CHROMATICITY



TM30: 77,8



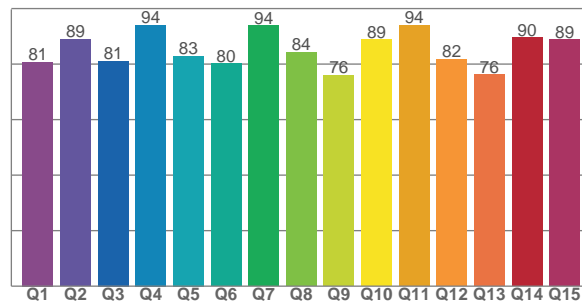
CRI: 70,5 (R1-R8)



COLOR PARAMETERS

Color Temperature	Color Rendering Index	Red Component	Color Fidelity	Color Gamut
CCT	CRI	CRI R9	TM30 Rf	TM30 Rg
6522 K	70,5	-53,6	77,8	117,4

CQS: 84,3



Television Lighting Consistency Index	Color Quality Scale	Color Coordinate CIE 1931	Color Coordinate CIE 1931	Color Coordinate CIE 1964	Color Coordinate CIE 1964	Color Deviation from Black Body
TLCI	CQS	x	y	u	v	Δuv
56	84,3	0,313	0,322	0,201	0,310	-0,0007

Photometric Report

MAC Aura XIP – Narrow

TM30

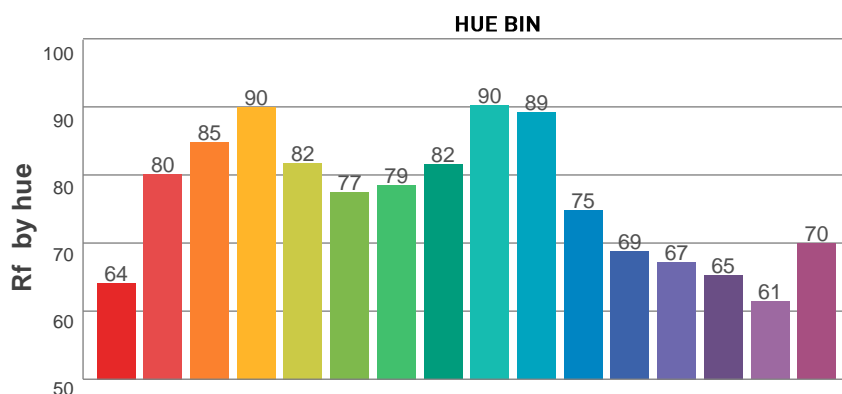
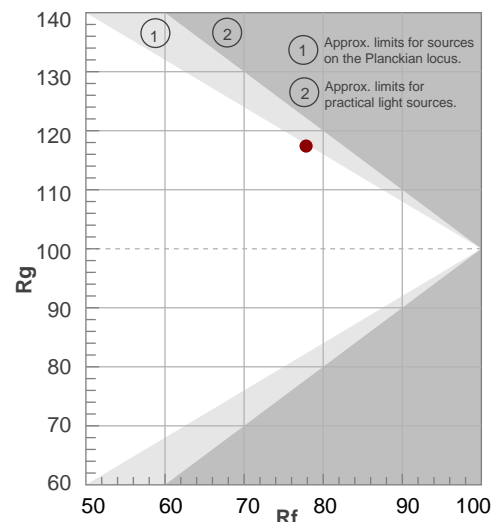
Rf 77,8

Fidelity index Rf

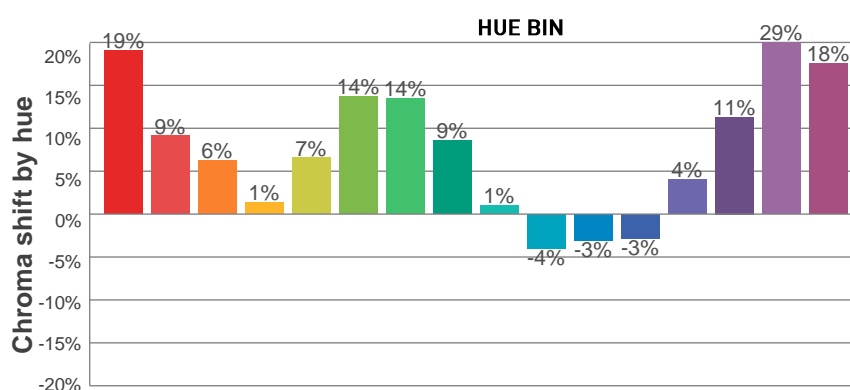
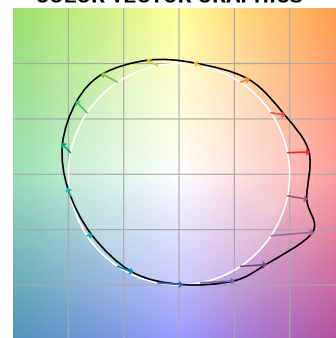
Rg 117,4

Gamut index Rg

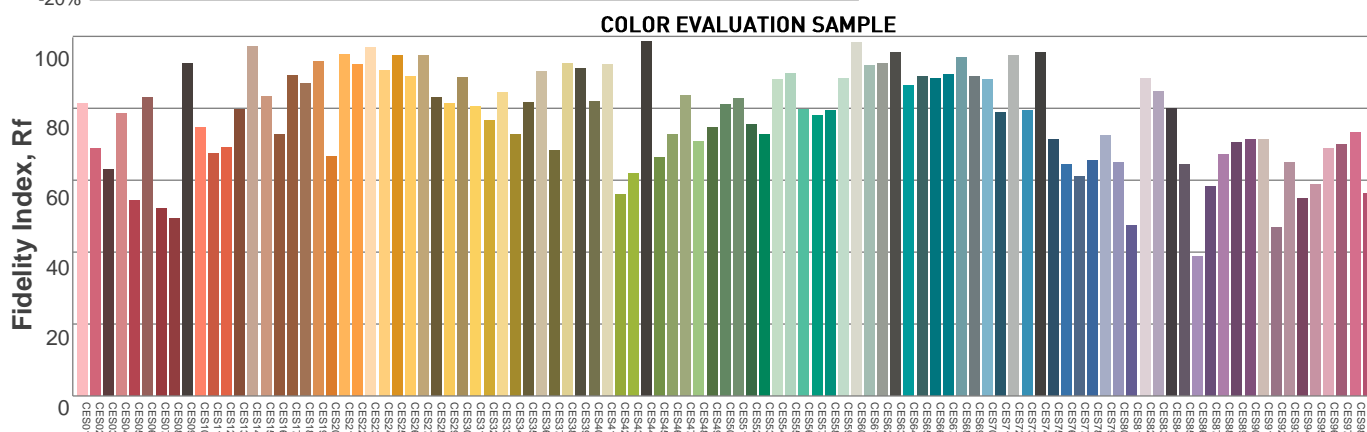
Hue Bin	R _f	Graphic shifts (%)	
		Chroma	Hue
1	64	19%	-3%
2	80	9%	-9%
3	85	6%	-5%
4	90	1%	6%
5	82	7%	8%
6	77	14%	7%
7	79	14%	-3%
8	82	9%	-6%
9	90	1%	-7%
10	89	-4%	2%
11	75	-3%	14%
12	69	-3%	22%
13	67	4%	30%
14	65	11%	20%
15	61	29%	23%
16	70	18%	0%



COLOR VECTOR GRAPHICS



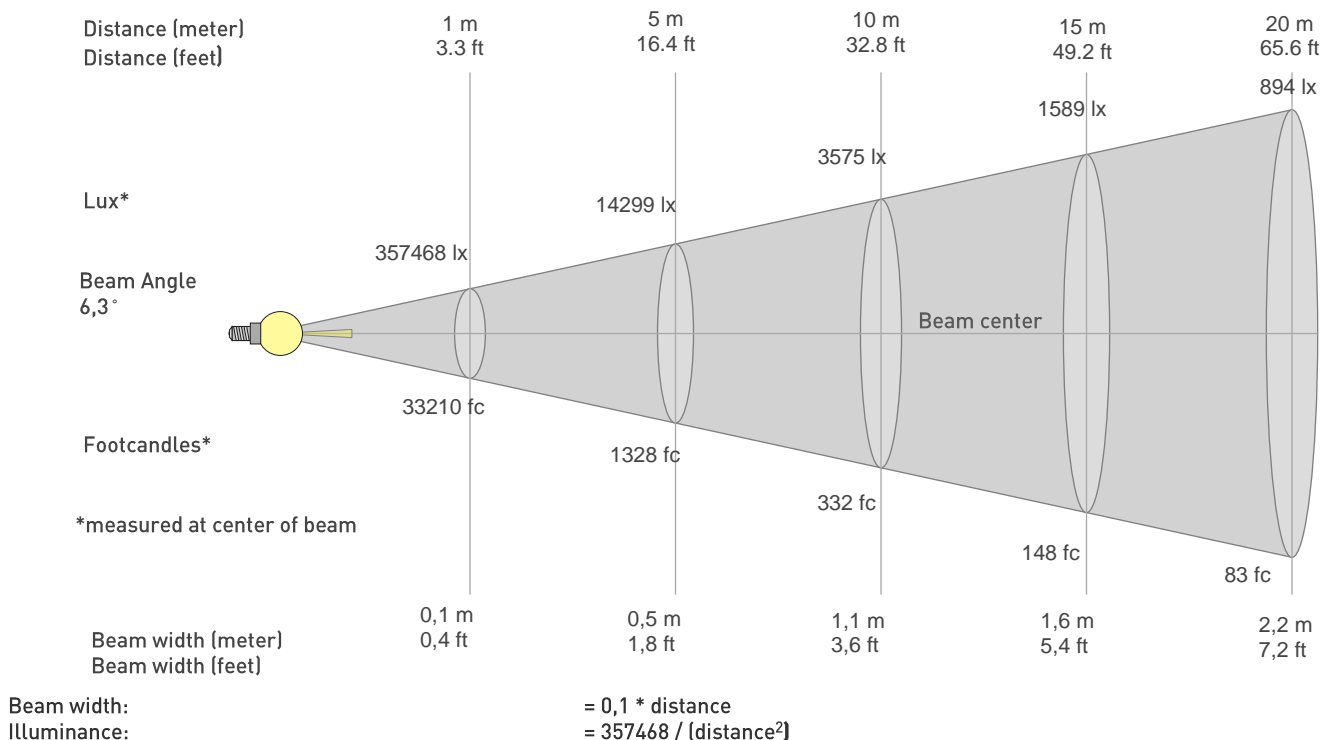
COLOR DISTORTION GRAPHICS



Photometric Report

MAC Aura XIP – Narrow

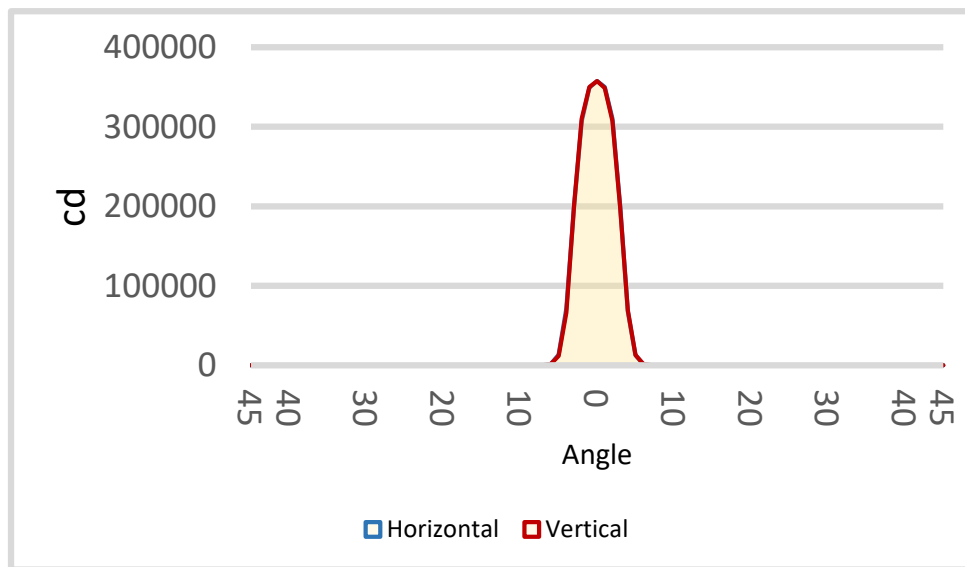
BEAM DETAILS



distance in [m] for illuminance in [lux] distance in [ft] for illuminance in [fc]

BEAM ILLUMINANCE FROM 1-20M

1m	2m	3m	4m	5m	6m	7m	8m	9m	10m	11m	12m	13m	14m	15m	16m	17m	18m	19m	20m
3,3ft	6,6ft	9,8ft	13,1ft	16,4ft	19,7ft	23ft	26,2ft	29,5ft	32,8ft	36,1ft	39,4ft	42,7ft	45,9ft	49,2ft	52,5ft	55,8ft	59,1ft	62,3ft	65,6ft
357468lx	89367lx	39719lx	22342lx	14299lx	9930lx	7295lx	5585lx	4413lx	3575lx	2954lx	2482lx	2115lx	1824lx	1589lx	1396lx	1237lx	1103lx	990lx	894lx
33209,9fc	8302,5fc	3690fc	2075,6fc	1328,4fc	922,5fc	677,8fc	518,9fc	410fc	332,1fc	274,5fc	230,6fc	196,5fc	169,4fc	147,6fc	129,7fc	114,9fc	102,5fc	92fc	83fc



BEAM ANGLE 50%	FIELD ANGLE 10%	CUTOFF ANGLE 3%
6,3°	8,8°	10,4°